

Adult Literacy Organisers' Association



Collaboration between Education and Training Board (ETB)

Adult Literacy Services and the Public Libraries Service

Research conducted: December 2016

Response rate: 43%

Publication Date: 9th January 2017

Introduction

This research was conducted by the Adult Literacy Organisers' Association in December 2016. Ten questions were asked of Adult Literacy Organisers to establish the extent of the day to day engagement and collaboration between the ETB Adult Literacy Services and the Library Services.

Do you hold classes with any library in your county?

Do you/your staff organise visits to the library for students

Do you actively encourage learners to join the library?

Have you worked with the library to get relevant books/media in its service for your learners?

How often do you have contact with the library?

Have you had any joint projects with the library?

If yes, were they once-off/long term projects?

Have you done Literacy Awareness Training with the library?

Do you advertise courses through the library?

Do you think you could work closer with the service?

The response rate was 43%.

Collaboration between the Adult Literacy Services and the Public Libraries Services is important for Adult Literacy Organisers. Good collaboration sets structures and relationships that help learners develop skills, knowledge and develop a sense of belonging in a community. This research shows that throughout the country Adult Literacy Organisers and librarians work closely together by sharing and collaborating well and focussing on joint initiatives that can improve prospects for Adult Literacy learners.

I would like to thank Kathleen Dunne, ALO in Laois Offaly ETB who conducted this research on behalf of the ALOA.

Aoife McCormack

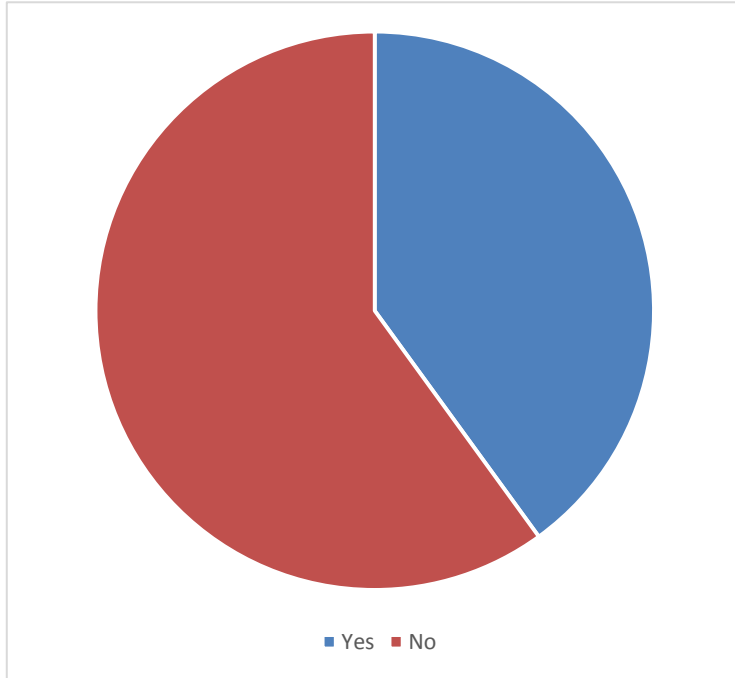
Chair, Adult Literacy Organisers' Association

9th January 2017

Question 1

Do you hold classes with any library in your county?

Yes	40%
No	60%



If yes, what for? / Comments

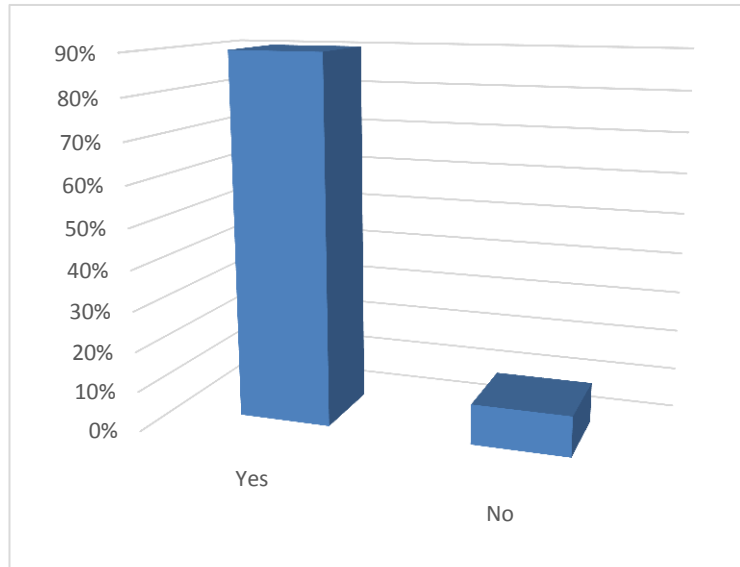
1	Some groups
2	Not in our library because it is too small
3	Reading group
4	One-to-one, group literacy and computers
5	Creative writing group
6	One-to-one occasionally
7	ESOL & Literacy
8	Family Learning groups visit the library as part of their classes, some classes use library Fun Science etc.
9	We also have a system where the library will open earlier so that students can visit and see the layout when visiting the library for the first time.
10	Group ESOL Tuition



Question 2

Do you/your staff organise visits to the library for students

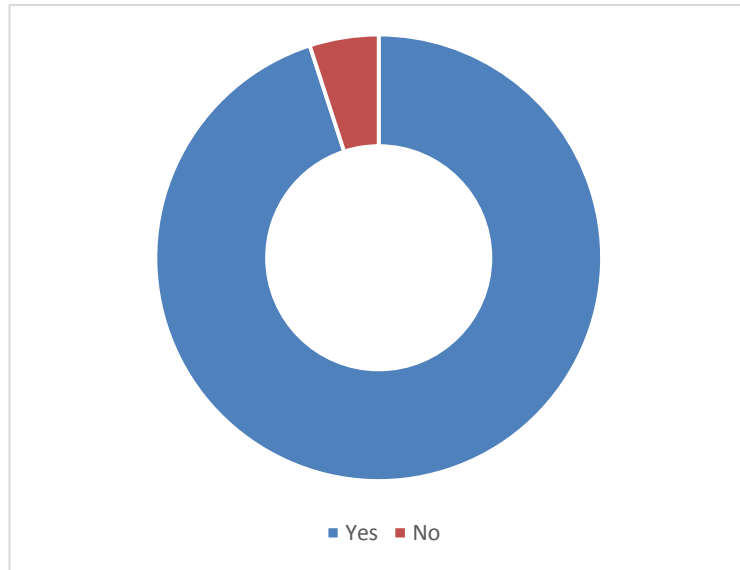
Yes	90%
No	10%



Question 3

Do you actively encourage learners to join the library?

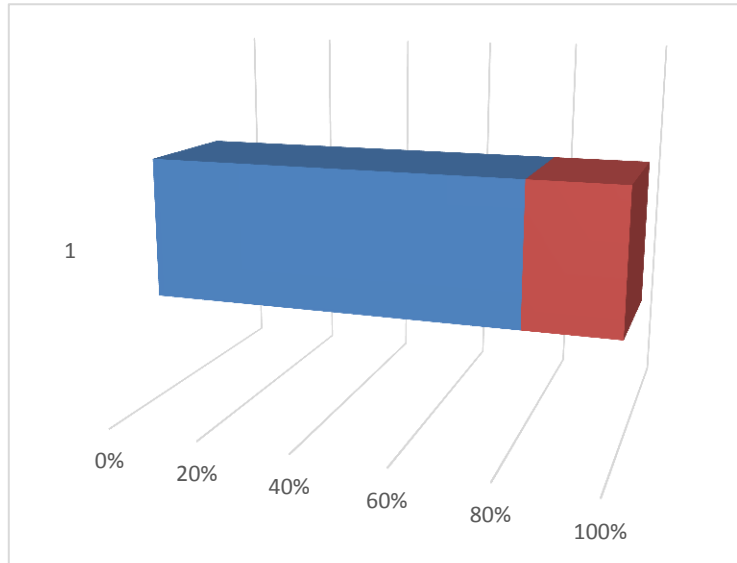
Yes	95%
No	5%



Question 4

Have you worked with the library to get relevant books/media in its service for your learners?

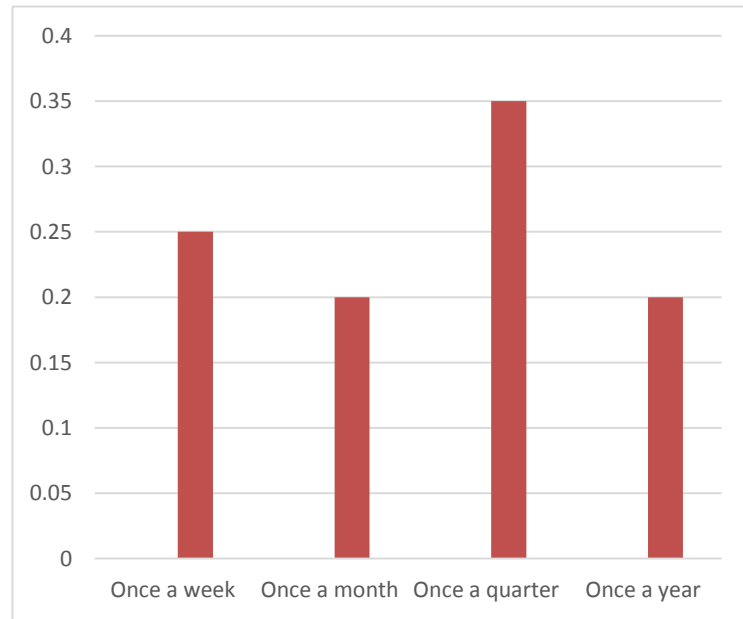
Yes	80%
No	20%



Question 5

How often do you have contact with the library?

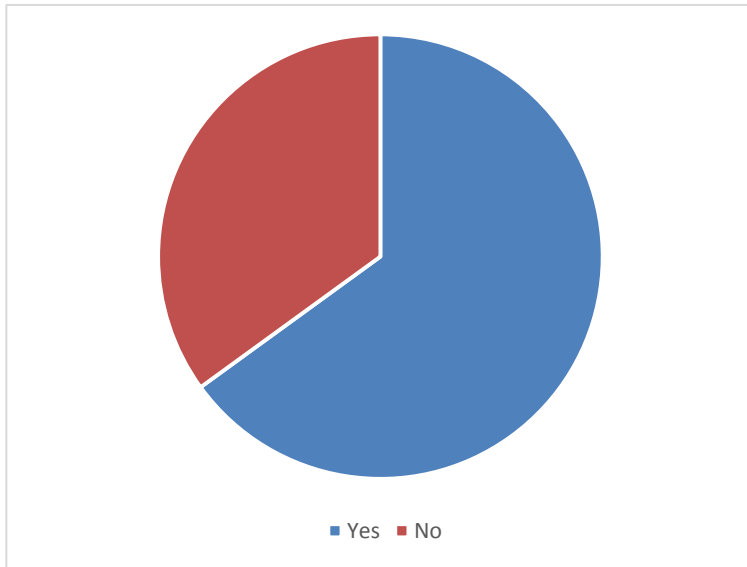
Once a week		25%
Once a month		20%
Once a quarter		35%
Once a year		20%



Question 6

Have you had any joint projects with the library?

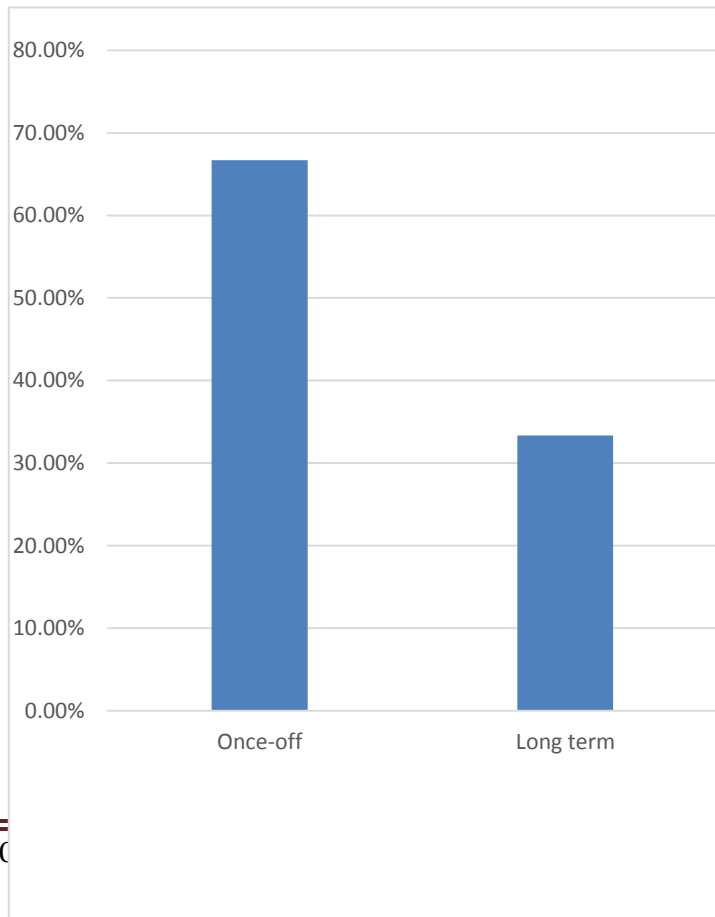
Yes	65%
No	35%



Question 7

If yes, were they once-off/long term projects?

Once-off	66.67%
Long term	33.33%



Comments

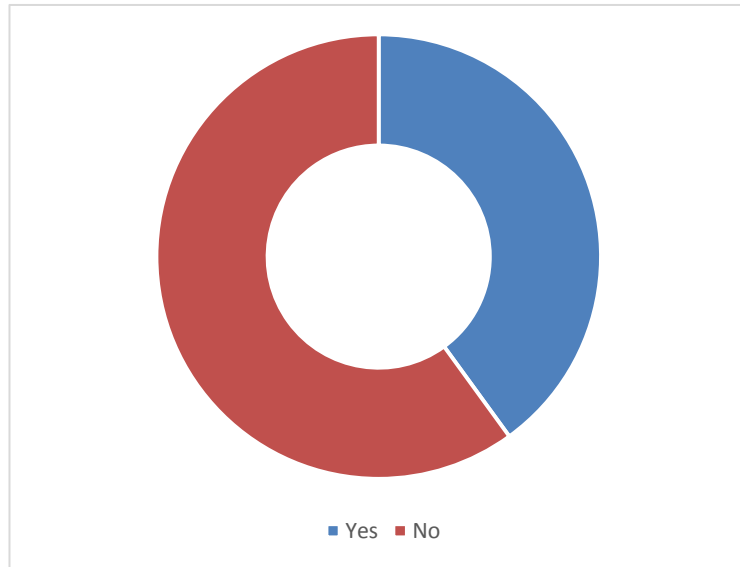
1	We operate a reading challenge in conjunction with the library
2	We have done both. A long running reading group meets in the Scariff library every week. We have held family learning classes in the library. Also arranged a number of one off events
3	Both - Family Learning project, classes, awards ceremonies etc
4	We worked with museum and library on the hidden gems of Clare project - class visited the museum, researched important sites around the county, planned a field trip and produced a brochure
5	Librarian worked with me to promote course in outreach area
6	Library facilitated an exhibition of students art work. when a new library was opening in the area they consulted with us on getting books suitable for beginner adult readers and had a section especially for these books
7	Promoting NALAs Help My Kid Learn website/ My Baby and Me event
8	We held information sessions in the library and student presentation events
9	1. Annually as part of the learning festival, the Literacy Scheme organises an open evening in the Lib, with readings, refreshments, and tour. 2. Co-operated on creative writing classes for Literacy Scheme 'graduates'
10	Reading Challenge with adult literacy group, supported by the library service

Library have sets of books reserved for the programme and can be used by learners as a "book club" during class. They are moved around the county through the library for other areas to use within the literacy service

Question 8

Have you done Literacy Awareness Training with the library?

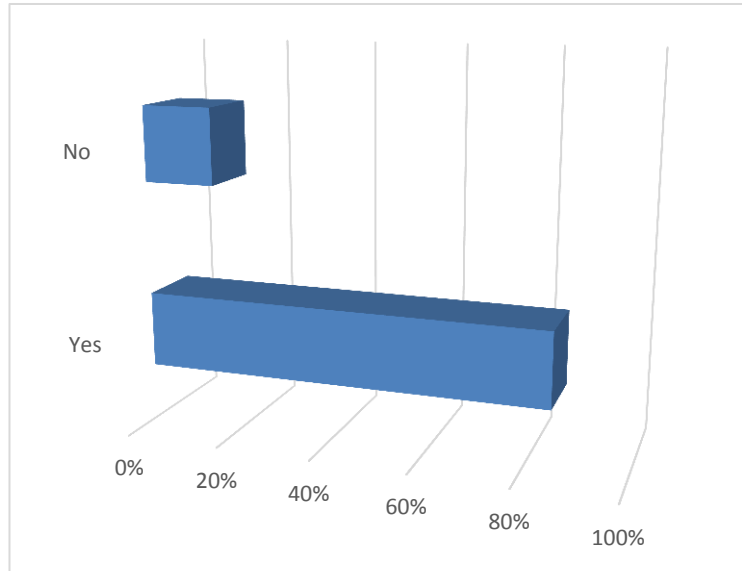
Yes	40%
No	60%



Question 9

Do you advertise courses through the library?

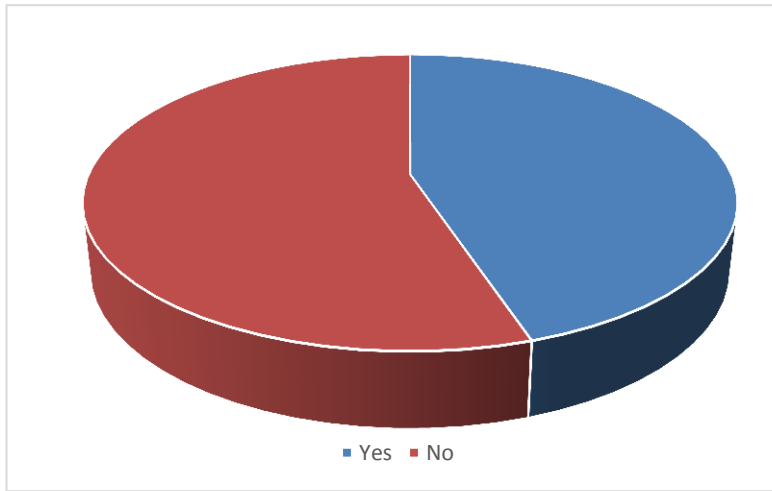
Yes	85%
No	15%



Question 10

Do you think you could work closer with the service?

Yes	45%
No	55%



	If so, how?
1	Increase student trips to the library to encourage more students to avail of the library service.
2	Encourage students and tutors to visit it more often. Advertise the activities which are held in the library.
3	We would like to use the library space for exhibitionns for students' work.
4	There is no library in the area where I work, usually students have to visit the city library. If there was a library in our area it would create closer links. We have had library evenings with students in the past. It would be fantastic to work with the library service as they are super to work with.
5	A service can always work closer - there is always room for improvement and new ideas.
6	It is important to have the local library service as a member of the local education network.
7	Areas reserved within the library for literacy learners and access books i.e. a section of the library with low level readers availale and easy to access.
8	Join up with writing groups for those who have just started back in education.